



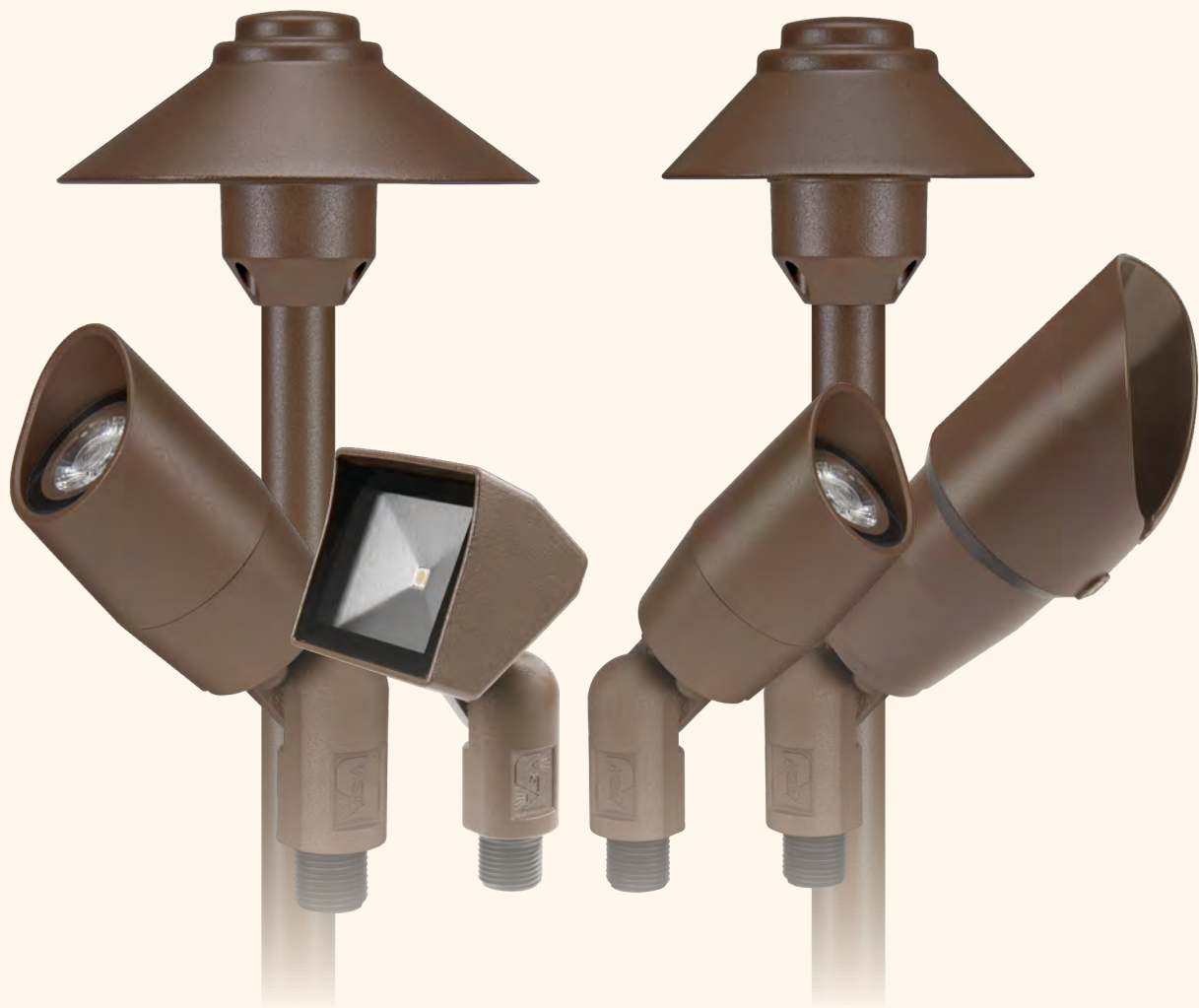
LANDSCAPE  
LIGHTING

# V SERIES COLLECTION



PROFESSIONAL  
OUTDOOR LIGHTING

# VALUE. VERSATILITY. VICTORY.



## V SERIES COLLECTION

*FROM VISTA PROFESSIONAL OUTDOOR LIGHTING*

Now, no job is out of reach. The V Series Collection includes six LED models in five standard finishes (and 13 premium finishes), so you can assemble an arsenal of high-quality, versatile fixtures—all at an unbeatable value.



## The Value You Want

Get the most out of your investment. The V Series Collection is constructed of thick-wall, die-cast A360 aluminum for extra strength and high corrosion resistance, even in hot climates. The compact size makes it easy to hide fixtures in the landscape, while the single COB LED technology uses less wattage to put out more lumens of light. With its durable engineering and precision lighting, you won't have to sacrifice top-of-the-line performance for value.

» Thick-wall, die-cast A360 aluminum

» Compact size for easy hiding in landscape

» COB LED technology

## The Versatility You Need

No two landscapes are alike. This collection is designed to be broad—with four Up & Accent lights and two Path Lights—to help you tackle a variety of outdoor lighting projects. And with 18 different finish options to choose from, you can stock up to experiment with different looks for different properties. The V Series is also made for lasting satisfaction, with features like injection-molded polymer knuckles for the Up & Accent models, and a lamp life of 30,000 hours for the Path Lights.

	2216
	5006
	5014i
	5105
	2265
	2267

### Get the Complete Details

Download the comprehensive spec sheet at [vistapro.com](http://vistapro.com)



**PROFESSIONAL  
OUTDOOR LIGHTING**

# AT-A-GLANCE

## PATH LIGHTS

2265 | 2267

- » Thick-wall, die-cast aluminum shade and lamp base
- » Heavy-gauge brass stem with ½" NPS
- » Textured polycarbonate optic lens for even light distribution
- » 30,000-hour lamp life

## UP & ACCENTS

2216 | 5006 | 5014I | 5105

- » Thick-wall, die-cast aluminum construction
- » Injection-molded, reinforced polymer knuckle with ½" NPS



**PROFESSIONAL**  
OUTDOOR LIGHTING



1625 Surveyor Ave | Simi Valley, CA 93063  
t: 805-527-0987 | 800-766-VISTA (8478) | f: 888-670-VISTA (8478) | email@vistapro.com | vistapro.com

Copyright © Vista Professional Outdoor Lighting 2018. All rights reserved. Printed in the USA. LT1844 (12/18)