



LANDSCAPE
LIGHTING

HIGH-PERFORMANCE LED LAMPS



SOLUTIONS SPECIFICALLY FOR LANDSCAPE LIGHTING



AMERICAN MADE

HIGH-PERFORMANCE LED LAMPS

MADE IN AMERICA SPECIFICALLY FOR LANDSCAPE LIGHTING APPLICATIONS

Vista has developed a new LED lamp concept “from the ground up” that incorporates revolutionary patent-pending features that provide innovative performance advantages in outdoor environments. Outdoor applications have temperature and humidity extremes rarely encountered in indoors.

Vista’s engineers tested hundreds of “indoor” lamps being offered to the landscape market and concluded that very few would offer the lifespan and long-term performance demanded by professionals.

Vista’s new LED lamps will enable you to upgrade any existing landscape lighting installation to the energy-saving benefits of LED without sacrificing performance, longevity or quality of light.



ORDER FACTORY-INSTALLED OR RETROFIT IN THE FIELD

AVAILABLE IN YOUR FAVORITE VISTA FIXTURES

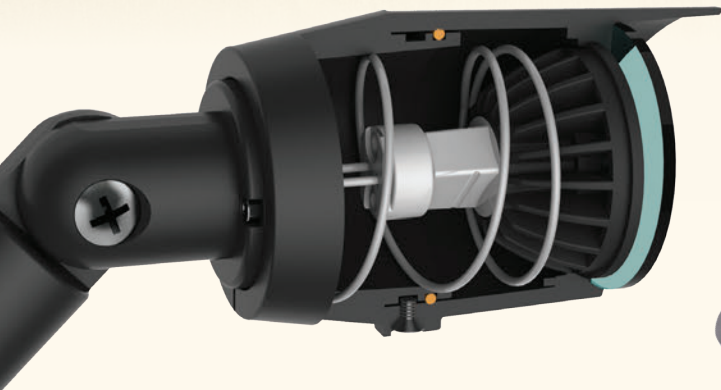
Your favorite Vista up-and-accent, in-ground, path-and-spread, brick/step and specialty fixtures are available with Vista’s new LED lamps as a factory-installed option. Enjoy the industry’s broadest selection of American-made fixture styles in energy-saving LED. Simply add the part number of the lamp to the fixture model number.

INDIVIDUAL RETROFIT LAMPS

Upgrade any existing landscape lighting installation to the energy-saving benefits of LED. Optics and light output meet or exceed halogen performance for customer-pleasing results. Huge opportunities to help thousands of existing installations “go green.”



ENGINEERED FOR OUTDOOR LIGHTING SPECIFICALLY FOR USE IN EXTERIOR LIGHTING FIXTURES



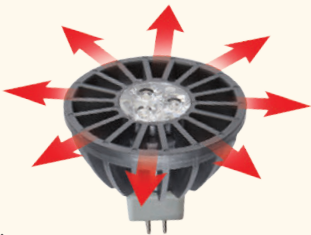
INNOVATIVE UNITIZED CONSTRUCTION

This forward-thinking design seals the LED board and driver in the corrosion-resistant thermo-composite body during the molding process. This environmentally isolates the critical components and avoids the complex multiple part-on-part construction of common aluminum LED lamps; eliminating fasteners, screws, glues, thermo grease and hand assembly. Composite material also helps prevent potential electrolysis that could occur when an aluminum lamp is used in certain copper or brass fixtures.



ADVANCED THERMAL MANAGEMENT

Achieving long life requires the ability to dissipate heat effectively away from the LEDs and driver, even in a sealed fixture. Using a patent-pending thermal management that features a thermo-composite heat sink design, the Vista LED lamps can operate up to 25 degrees cooler than standard LED aluminum lamps.



DRAMATIC ENERGY SAVINGS

4.5W MR-16 lamp replaces 20W halogen, 5.5W MR-16 lamp replaces 35 watt halogen. 2.5W MR-11 and T3 lamps replace 20W halogen. Low wattage draw allows more lamps per cable and transformer. Easily add new fixtures to existing wiring when converting to LED.

EYE-APPEALING, PRECISE LIGHT

Warm white, rated at 2950K with consistent color from lamp to lamp, with high performance optics. Choice of 15, 25, 36, 50 and 60 degree beam spreads for MR-16 and MR-11 LEDs. LED T3 includes 360 degree side emitting optics.



VISTA HIGH-PERFORMANCE LED COMPARISON GUIDE

Model	Vista High-Performance LED Lamps						Halogen Equivalent			Savings	
	Wattage	Lumens	Beam Angle	CRI	Life (Hrs)	Annual Operating Cost	Wattage	Life (Hrs)	Annual Operating Cost	Annual Savings Per Lamp	Extended Lamp Life (Hours)
LN16-4.5-W-15°-LED	4.5	255	15°	82	35,000	\$1.97	20	5,000	\$8.76	\$6.79	30,000
LN16-4.5-W-25°-LED	4.5	255	25°	82	35,000	\$1.97	20	5,000	\$8.76	\$6.79	30,000
LN16-4.5-W-36°-LED	4.5	267	36°	82	35,000	\$1.97	20	5,000	\$8.76	\$6.79	30,000
LN16-4.5-W-60°-LED	4.5	255	60°	82	35,000	\$1.97	20	5,000	\$8.76	\$6.79	30,000
LN16-5.5-W-15°-LED	5.5	335	15°	82	35,000	\$2.41	35	5,000	\$15.33	\$12.92	30,000
LN16-5.5-W-25°-LED	5.5	355	25°	82	35,000	\$2.41	35	5,000	\$15.33	\$12.92	30,000
LN16-5.5-W-36°-LED	5.5	364	36°	82	35,000	\$2.41	35	5,000	\$15.33	\$12.92	30,000
LN16-5.5-W-60°-LED	5.5	352	60°	82	35,000	\$2.41	35	5,000	\$15.33	\$12.92	35,000
LN11-2.5-W-15°-LED	2.5	200	15°	82	30,000	\$1.10	20	2,000	\$8.76	\$7.67	28,000
LN11-2.5-W-25°-LED	2.5	200	25°	82	30,000	\$1.10	20	2,000	\$8.76	\$7.67	28,000
LN11-2.5-W-36°-LED	2.5	200	36°	82	30,000	\$1.10	20	2,000	\$8.76	\$7.67	28,000
LN11-2.5-W-60°-LED	2.5	200	60°	82	30,000	\$1.10	20	2,000	\$8.76	\$7.67	28,000
LNT3-2.5-W-S-LED	2.5	170	NA	80	30,000	\$1.10	20	2,000	\$8.76	\$7.67	28,000
LNT3-2.5-W-D-LED	2.5	170	NA	80	30,000	\$1.10	20	2,000	\$8.76	\$7.67	28,000

Note: Operating cost based on \$0.12/kwh and 3650 hours of operation.

FEATURES & SPECIFICATIONS

- **Designed & Manufactured in USA** – exclusively for Vista Professional Outdoor Lighting.
- **Up to 80% Energy Savings over standard halogen lamps.** Low wattage draw allows more lamps per cable and transformer. Add new fixtures to existing wiring when converting to LED.
- **35,000 hour lamp life** – reduces maintenance, annual re-lamping and lamp replacement costs. 5 year warranty.
- **Operating Voltage** – 9V to 15V (AC/DC), virtually eliminates voltage drop concerns.
- **Dimmable** – with most magnetic transformers.
- **Wattage:** 4.5W lamp replaces 20W halogen, 5.5W lamp replaces 35 watt halogen.
- **Precision optics** - choice of 25, 36 and 60 degree beam spreads.
- **Eye-appealing warm white light** – designed to closely match the performance of MR-16 halogen lamps, rated at 3000K, consistent color from lamp to lamp. Allows for mixing with other halogen fixtures on the same project.
- **Advanced Thermo Composite design** – Corrosion-resistant material reliably dissipates heat for long life. Effectively eliminates unsafe electrolysis when aluminum lamp comes in contact with certain copper or brass fixtures.
- **Green design** – RoHS Compliant, mercury free, fully recyclable.



**LANDSCAPE
LIGHTING**



AMERICAN MADE